

**Date:** Tuesday, 12 January 2021  
**Our Ref.:** TollBar/05/CB

Dear Resident,

**Toll Bar Junction Improvement Scheme – Update 5**

Further to our previous update letter dated December 17<sup>th</sup> 2020, we would like to advise you that the final phase of the Toll Bar Junction Improvement Scheme is progressing well however, there will be a change to the previously communicated arrangements regarding the resurfacing element of the works; this change is detailed below:

Carriageway resurfacing will still take place from January 18<sup>th</sup> 2021 however, this work has now been scheduled to take place during the daytime. This change from night to day working has been agreed by our client. As previously advised, re-surfacing is reliant on stable positive temperatures and looking at the medium range forecast temperatures are due to drop below the optimum temperature for resurfacing in the coming weeks.

Additionally, there is a reduction in traffic volumes and the number of people requiring access to Tollbar Academy as a result of the national lockdown. Moving the resurfacing work from overnight to daytime working also eliminates any potential risk of construction related overnight disruption caused to those living within close proximity of the junction.

For the safety of both the public and site staff, the resurfacing work will involve a full closure of the junction from January 18<sup>th</sup> 2021 to January 22<sup>nd</sup> 2021 (inclusive), with the closure in effect between 07:30hrs and 18:00hrs. Please note that the closure date may be extended due to unforeseen risk (e.g., inclement weather) which may have an effect on site operations. Access to properties will be maintained at all times, but the junction will not be able to be used for the duration of the closure. We apologise for the disruption and inconvenience this will cause, but we will do everything possible to reduce this.

A strategic diversion via the A18 will be in place for A16 through traffic along with localised diversions for Station Road traffic. All diversion routes shall be clearly signed. Resident only access provision will be provided to those properties located within temporary closure limits with access for pedestrians maintained around the junction at all times. A drawing showing the closure and temporary traffic diversion routes is given on the reverse of this letter. Should you require them, the emergency contact details for Oneway, the Client’s appointed temporary traffic management subcontractor, are: **07904584406**.

Any pedestrians, including school children, in the area will be diverted around the works. Marshalls will be in place to assist where necessary.

Our Site Manager (Stephen Jones) continues to be available on site during operational hours. In addition, our Liaison Officer (Chris Butts) is also available as a point of contact for any concerns relating to site operations. Chris will be available during normal office working hours, Monday – Friday. You can contact either Stephen or Chris via the project telephone number: **07779431127**. The following email address will continue to provide another means of communication with our project team: [tollbarroundabout@crreynolds.co.uk](mailto:tollbarroundabout@crreynolds.co.uk). Through this email address and project

- Civil**
- Highways
- Bridges
- Reinforced Concrete
- Sea & River Defence
- Drainage
- Hard Landscaping
- Section 278 Works
- Rail**
- Major Structures
- Overbridges & Underbridges
- Retaining Walls
- Station Refurbishments
- Depot/Platform Improvements
- Level Crossing Upgrades
- Geotechnical Works
- Build**
- Industrial
- Commercial
- Design & Build
- Refurbishments
- Structural Alterations
- Residential Development



telephone number we will monitor concerns and comments raised and respond to them as soon as possible.

The project team wish to thank all residents, businesses, and Tollbar Academy for their continued patience throughout and during the closing phase of this scheme.

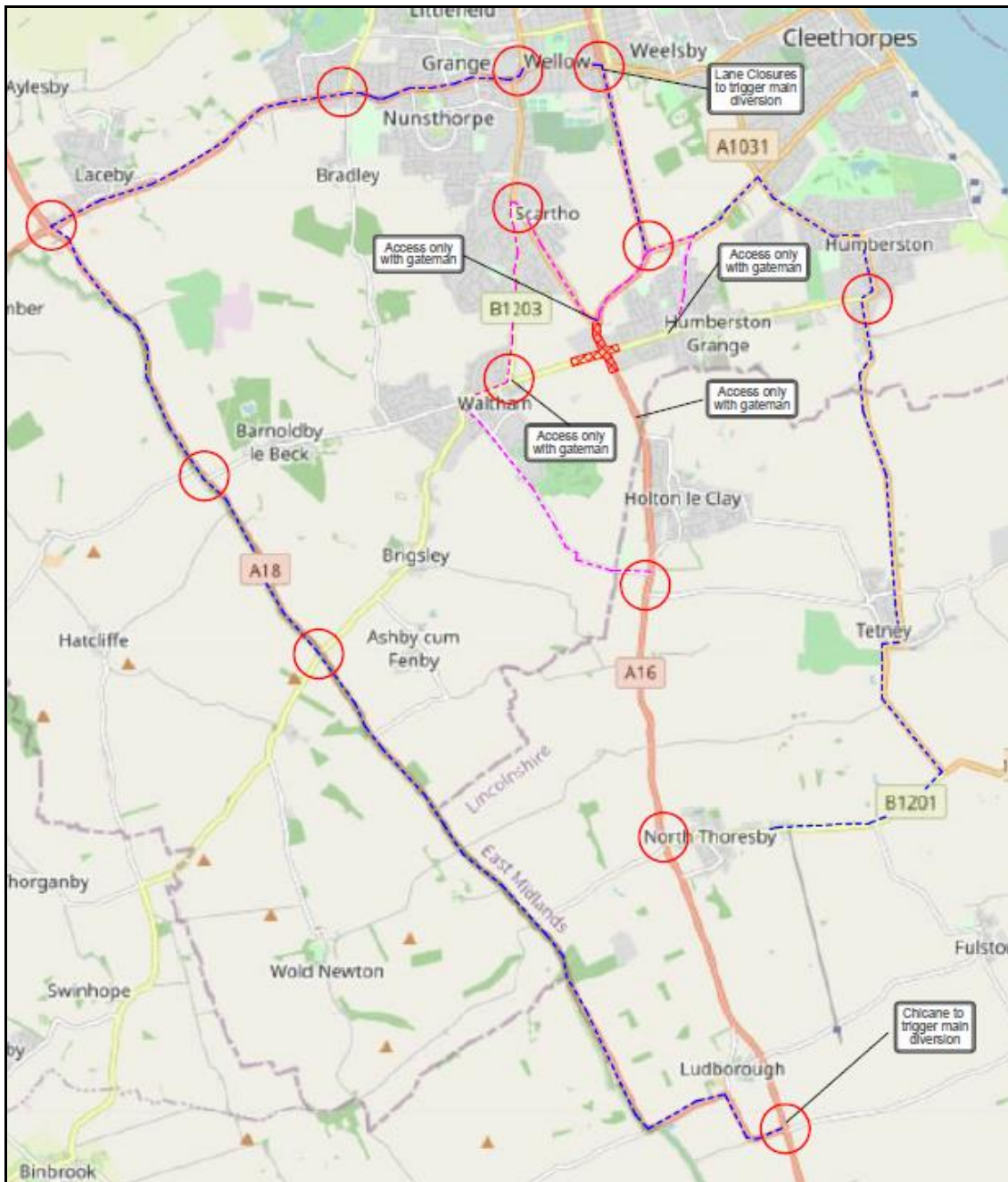
Kind regards,

C.R. Reynolds Ltd

- Civil
- Highways
- Bridges
- Reinforced Concrete
- Sea & River Defence
- Drainage
- Hard Landscaping
- Section 278 Works

- Rail
- Major Structures
- Overbridges & Underbridges
- Retaining Walls
- Station Refurbishments
- Depot/Platform Improvements
- Level Crossing Upgrades
- Geotechnical Works

- Build
- Industrial
- Commercial
- Design & Build
- Refurbishments
- Structural Alterations
- Residential Development



**Drawing Showing Traffic Diversion Routes**

